

FlexiBake



**manufacturing and
bakery production
software**

Table of Contents

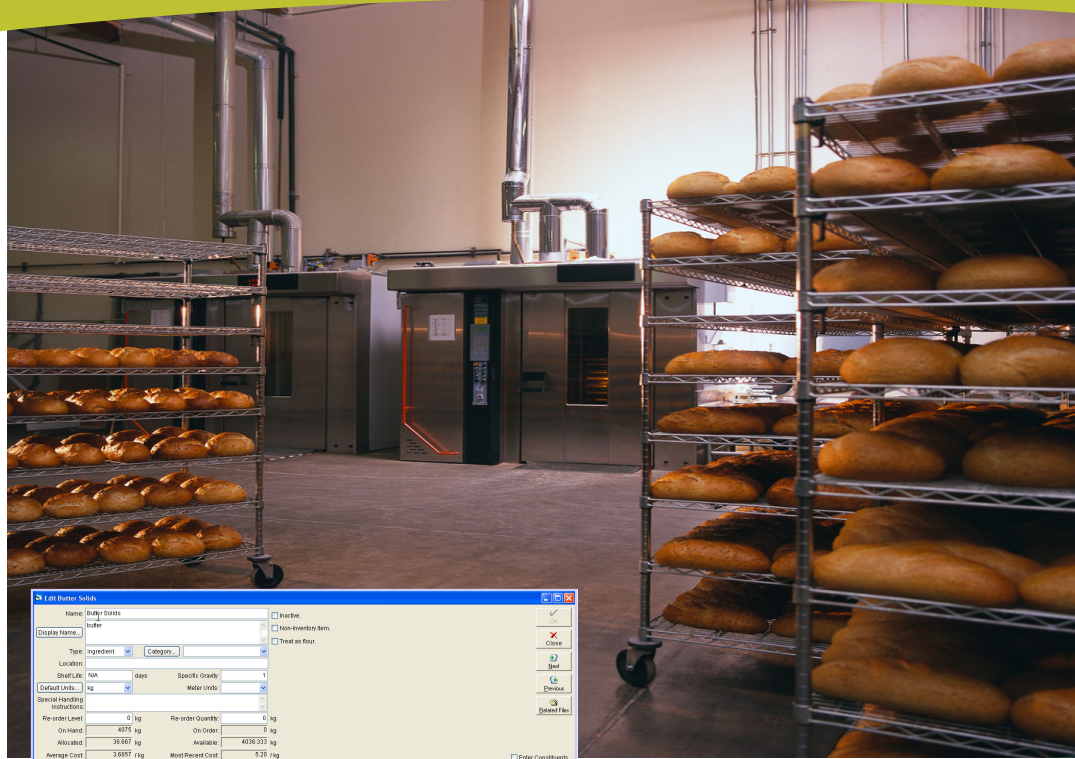
Table of Contents

FlexiBake Cover	P.1
Table of Contents	P.2
Inventory	P.3
Nutrition	P.4
Production	P.5
Sales	P.6
Purchasing	P.7
Shipping	P.8
Accounting	P.9
Management	P.10
Online Ordering	P.11
Point of Sale Interface	P.12
Affiliations	P.13
A Few Valued Customers	P.14



Call to book an online product demonstration 604-637-6528
Check out our website at www.flexibake.com

Inventory



File Butter Solids

Name: Butter Solids ☐ Inactive

Display Name: butter ☐ Non-Inventory Item

Type: Ingredient ☐ Category: ☐ Treat as Flour

Location:

Shelf Life: 180 days Specific Gravity: 1

Default Units: kg Water Units:

Special Handling Instructions:

Re-order Level: 0 kg Re-order Quantity: 0 kg

On-hand: 4075 kg On-order: 0 kg

Allocated: 36,697 kg Available: 40,333 kg

Average Cost: 3.6957 /kg Most Recent Cost: 5.20 /kg

Enter Constituents

Suppliers	Nutritional Analysis	Order History	Notes
Supplier	Supplier Code	Brand	Days
Bestest Creamery	001-02		1
BT Bakery (Canada) Inc.	BUTTER-NZ		1

Supplier: BT Bakery (Canada) Inc. Supplier Code: BUTTER-NZ Preferred: ☐

Brand: Lead Time: 1 day

Current Cost: 130 CAD which equates to: 25 /kg

Order Units: Update Delete

Organic Certificate #: Expires:

Insulator Certificate #: Expires:

File Bread Multi Grain

Code: BMDM ☐ Secret ☐ Inactive: ☐

Name: Bread, Multi-Grain Version: 1

Category: Breads Create New Version

Base Recipe: ☐

Formula	Production	Labour / Cost Summary	Nutritional An
Name	Quantity/Units	% Batch	Baker's
Mix, Easy Heartland Multi-Grain	40,000 kg	19.97%	35.3
Flour, Bread, White	60,000 kg	29.88%	54.5
Water	88,000 kg	43.71%	80.0
Yeast, Fresh Compressed	3,300 kg	1.63%	3.0
Flour, Whole Wheat	10,000 kg	4.98%	9.0

Raw Material:

Quantity:

Instructions:

Batch Weight: Only meaningful if all ingredients are entered by weight or Specific Gravity is entered for ingredients entered by volume. 201.3kg - 443.78lb - 443lb 12.7oz

Gross Weight: 201.3 kg Gross Yield: 0 pieces

Waste Factor: 0.646 % Cripple Factor: 0 Percent

Net Weight: 200 kg Net Yield: 200 kg

Scaling Weight: 0 kg per piece DZ Output:

Compare Versions, Resize Recipe, Reset Recipe

Detailed Costing Report
Price Tier: Standard Price

Product Code: BMDM
Description: Bread, Multi-Grain
Category: Artisan Breads
Customer: 054900412318
UPCC Code: 14684900345123
ECCN Code:

Min Stock Lvl: 0.00
Finished Wt: 1 kg
Shipping Vol: 3 days
Location:

Batch Yields: 200.00 loaf
Items per loaf: 1.00
Average Wage: 13.44 / hour

Hours Per Batch: 8.00
Hours Per Loaf: 0.04

	Per Batch	Per Loaf	Per Item	% Sell Price
Selling Price:	300.00	1.50	1.50	100%
Raw Material Cost:	96.66	0.48	0.48	24.78%
Packaging Cost:	11.24	0.06	0.06	2.88%
Labour Cost:	107.52	0.54	0.54	27.57%
Overhead Cost:	42.24	0.21	0.21	10.83%
Other Cost:	0.00	0.00	0.00	0.00%
Total Cost:	257.56	1.29	1.29	65.07%
Net Profit:	132.34	0.66	0.66	33.92%

INGREDIENTS:

Recipe	Quantity	Unit Cost	Total
Bread, Multi-Grain			
Mix, Easy Heartland Multi-Grain	40,000 kg	1.3750	55.00
Flour, Bread, White	60,000 kg	0.3055	23.01
Water	88,000 kg		
Yeast, Fresh Compressed	3,300 kg	2.0463	6.75
Flour, Whole Wheat	10,000 kg	1.0000	10.00
	201.3000		94.76
Ingredient Cost:			94.76
Cost of 1.00% Waste:			1.80
Total Ingredient Cost:			96.66

PACKAGING:

Description	Quantity	Unit Cost	Total
Bread Bag, Paper	200,000 ea	0.06	11.12
Packaging Cost:			11.12
Cost of 1.00% Waste:			0.11
Total Packaging Cost:			11.23

- Manage raw materials, ingredients, supplies, packaging and products
- Identifying what is on hand, minimum stock levels, allocated levels because of sales orders
- Maintain multiple suppliers and prices for raw materials
- Management of recipes, base recipes and sub recipes
- Use the clone function to reduce data entry for similar raw materials, recipes and finished products
- Create versions of recipes useful for research and development, then compare
- ingredients, nutritional facts and costs
- Password protect your secret recipes
- Identify your true cost for finished products taking into account ingredients, packaging, labour, waste, overhead, machinery costs with detail and summary reports
- Product Recall and Traceability
- Use templates to create attractive product lists catalogues for customers and customize by products, customer and price tier
- Create custom catalogues for target markets

Call to book an online product demonstration 604-637-6528
Check out our website at www.flexibake.com

Nutrition

- Enter nutritional content for each ingredient, recipe or finished product
- Use stored Nutritional Values from the CFIA or FDA let the system automatically calculate the nutritional contents
- Design your own labels, include your logo, company name, ingredient lists, price, barcodes, images and more
- Add additional nutritional information for marketing products
- Print labels with price tiers for customers
- Create Bitmaps of your labels to send to customers or printing company
- Create labels using stored nutritional facts panels from CIFA and FDA
- Get detailed nutritional analysis for your products ingredients by 100grams or by recommended serving size
- Create detailed product specifications sheets and allergen information sheets

Print Labels

Number of labels to print: 1

Label Name:

Printer: Microsoft Office Document Image Writer

Page Width: 4.0 Label Width: 4.0

Page Height: 5.0 Label Height: 5.0

Price tier to use when printing labels: <Standard Price>

☐ Substitute the following production values on labels

Production Date: 1/1/2009

Best Before Date: 1/1/2009

Batch ID:

Preview

Cheesecake, Assorted Berries, 9"

Nutrition Facts

Calories 240

Total Fat 8g

Saturated Fat 0.5g

Trans Fat 0g

Cholesterol 0mg

Sodium 340mg

Total Carbohydrate 37g

Dietary Fiber 3g

Sugars 8g

Protein 7g

Vitamin A 0%

Vitamin C 6%

Calcium 2%

Iron 15%

Vitamin D 0%

Thiamin 15%

Riboflavin 10%

Niacin 10%

Vitamin B12 0%

Percent Daily Values are based on a diet of other people's secrets.

Calories per gram: Fat 9 Carbohydrate 4 Protein 4

Print Labels

Number of labels to print: 6

Label Name:

Printer: IACS_SERVER\Samsung ML-1740 Series

Page Width: 9.5 Label Width: 3.85

Page Height: 11.0 Label Height: 3.5

Price tier to use when printing labels: <Standard Price>

☐ Substitute the following production values on labels

Production Date: 1/1/2009

Best Before Date: 1/1/2009

Batch ID:

Indicate the label you wish to start printing on by clicking the corresponding label on the image. This is useful in situations where some of the labels on a sheet have already been used. Labels are printed down then across.

Preview

Bread, Multi-Grain

Calories 240

Total Fat 8g

Saturated Fat 0.5g

Trans Fat 0g

Cholesterol 0mg

Sodium 340mg

Total Carbohydrate 37g

Dietary Fiber 3g

Sugars 8g

Protein 7g

Vitamin A 0%

Vitamin C 6%

Calcium 2%

Iron 15%

Vitamin D 0%

Thiamin 15%

Riboflavin 10%

Niacin 10%

Vitamin B12 0%

Percent Daily Values are based on a diet of other people's secrets.

Calories per gram: Fat 9 Carbohydrate 4 Protein 4

Nutrition Facts		
Serving Size		
Servings Per Container 1		
Amount Per Serving		
Calories 240		Calories from Fat 70
Calories From Saturated Fat 0		
		% Daily Value*
Total Fat 8g		12%
Saturated Fat 0.5g		3%
TransFat 0g		
Cholesterol 0mg		0%
Sodium 340mg		14%
Total Carbohydrate 37g		12%
Dietary Fiber 3g		11%
Sugars 8g		
Protein 7g		15%
Vitamin A 0%		
Vitamin C 6%		
Calcium 2%		
Iron 15%		
Vitamin D 0%		
Thiamin 15%		
Riboflavin 10%		
Niacin 10%		
Vitamin B12 0%		
* Percent Daily Values are based on a 2,000 calorie diet. Your daily values may be higher or lower depending on your calorie needs.		
	Calories	2,000 2,500
Total Fat	Less than 65g	80g
Sat Fat	Less than 20g	25g
Cholesterol	Less than 300mg	300mg
Sodium	Less than 2,400mg	2,400mg
Total Carbohydrate	300g	375g
Dietary Fiber	25g	30g
Calories per gram		
Fat 9	Carbohydrate 4	Protein 4

Nutritional Analysis

Product: **Cake, Black Forest, 10" [CKBLKFOR10]**

Serving Size: 135 grams

Servings Per Container: 12.000

Data Source: Calculated

Energy	412.683	kCal		
Protein	5.055	g		
Total Carbohydrates	52.656	g		
Total Sugar	26.336	g		
Dietary Fibre	1.512	g		
Soluble Fibre	0.000	g		
Insoluble Fibre	0.000	g		
Sugar Alcohols	0.000	g		
Starch / Other Carbs	0.000	g		
Total Fat	21.341	g		
Saturated Fat	5.958	g		
Monounsaturated Fat	4.092	g		
Polysaturated Fat	0.780	g		
Omega-3 Fat	0.000	g		
Omega-6 Fat	0.000	g		
Trans Fat	0.292	g		
Cholesterol	104.465	mg		
Sodium	368.537	mg		
Water	2.777	g		
Ash	1.128	g		
Alcohol	0.000	g		
Caffeine	0.000	mg		
Theobromine	0.000	mg		









Minerals

Calcium	37.363	mg		
Chlorine	0.000	mg		
Copper	0.031	mg		
Iodine	0.000	µg		
Iron	2.117	mg		
Magnesium	20.922	mg		
Manganese	0.035	mg		
Phosphorus	111.846	mg		
Potassium	101.873	mg		

Vitamins

Vitamin A				
Retinol				
Total Carotenoids				
Beta-Carotene				
Alpha-Carotene				
Beta-Cryptoxanthin				
Lycopene				
Lutein+Zeaxanthin				
Thiamine				
Riboflavin				
Niacin				
Vitamin B6				
Vitamin B12				
Biotin				
Choline				
Total Folate				
Food Folate				
Folic Acid				
Pantothenic Acid				
Vitamin C				
Vitamin D				
Vitamin E				
Vitamin K				

Product Catalogue

		
Code: CKBLKFOR10 Name: Cake, Black Forest, 10" Pack Size: 12 cakes per box Price: \$2.25 Qty Ordered: <input type="text"/>	Code: CKBLKFOR10 Name: Cake, Black Forest, 10" Pack Size: 12 cakes per box Price: \$2.25 Qty Ordered: <input type="text"/>	Code: CKBLKFOR10 Name: Cake, Black Forest, 10" Pack Size: 12 cakes per box Price: \$2.25 Qty Ordered: <input type="text"/>
		
Code: CKBLKFOR10 Name: Cake, Black Forest, 10" Pack Size: 12 cakes per box Price: \$2.25 Qty Ordered: <input type="text"/>	Code: CKBLKFOR10 Name: Cake, Black Forest, 10" Pack Size: 12 cakes per box Price: \$2.25 Qty Ordered: <input type="text"/>	Code: CKBLKFOR10 Name: Cake, Black Forest, 10" Pack Size: 12 cakes per box Price: \$2.25 Qty Ordered: <input type="text"/>
		
Code: CKBLKFOR10 Name: Cake, Black Forest, 10" Pack Size: 12 cakes per box Price: \$2.25 Qty Ordered: <input type="text"/>	Code: CKBLKFOR10 Name: Cake, Black Forest, 10" Pack Size: 12 cakes per box Price: \$2.25 Qty Ordered: <input type="text"/>	Code: CKBLKFOR10 Name: Cake, Black Forest, 10" Pack Size: 12 cakes per box Price: \$2.25 Qty Ordered: <input type="text"/>

Date of order: Customer Name: Ship to:

Signature of Shipper: Customer Signature:

January 14, 2009 at 3:42:13PM Page 2 of 2

Production



Production Scheduled Mon, Jan 26, 2009 to Fri, Jan 30, 2009

1 Day View 1 Week View 2 Week View 4 Week View

Mon, Jan 26	Tue, Jan 27	Wed, Jan 28	Thu, Jan 29	Fri, Jan 30
BRNCC 1900 brouille	BRNCC 1900 brouille	BRNCC 1900 brouille		
BROWG 800 bat	SOLF 74 bat	BROWG 800 bat		
BROWG 800 bat	SOBLE 78 bat	BROWG 800 bat		
BROWG 400 bat	SDOT 44 bat	BROWG 400 bat		
SOBLE 80 bat	SDOT 22 ea	BROWG 400 bat		
SOLF 50 bat	SDOT 22 ea	SOLF 74 bat		
BRDSD 50 bat	SDOT 20 bat	SOBLE 73 bat		
SDOT 20 bat	SDOT 11 DZ	SDOT 34 bat		
CHDMN 50 cs	SDOT 22 ea	SDOT 22 ea		
SDK 10 DZ	SDOT 22 ea	SDOT 22 ea		
SDT 10 ea	CHDMN 50 cs	SDOT 22 ea		
SDR 10 DZ	SDOT 20 DZ	SDOT 20 DZ		
SDCL 10 DZ	SDOT 11 DZ	SDOT 11 DZ		
		CHGASPRN 140 cs		

Product Required For The Period: 1/26/2009 to 1/29/2009 Only Display Required Products

Plan Production

Production Date: 1/28/2009

☐ Ignore shipped quantities when generating reports
☐ Display Baker's Percentage on Work Instructions

Search by name:

Code	Name	Units	Batch Qty	Qty Prod	Pcs / Stroke	Full Strokes	Hand Divide	Qty To Produce	Batches to Produce	Qty Prod
BROWG	Bread, Multi-Grain	kg	202.195	2000	0	0	2000	2000	2000	2000
BASCHS	Cheesecake Base	kg	120	240	0	0	240	240	240	240
DKHNBGP	Dough, NB, General Purpose	kg	200	240	0	0	240	240	240	240
FI, SDB	FI, Bread, Sourdough, Baguette	ea	30.936	100	12	9	0	108	108	108
FLSDOT	FI, Bread, Sourdough, Baton	ea	30.935	44	12	5	0	60	60	60
FI, SOBLE	FI, Bread, Sourdough, Boule	ea	30.935	72	12	7	0	84	84	84
FI, BRDS	FI, Bread, Sourdough, Cloverleaf	DZ	248.89	11	24	3	0	24	24	24
FI, SDTW	FI, Bread, Sourdough, Knot	DZ	247.48	22	24	3	0	36	36	36
FI, SDL	FI, Bread, Sourdough, Loaf	ea	30.936	74	12	7	0	84	84	84
FI, BRDS	FI, Bread, Sourdough, Roll	DZ	248.89	20	12	3	0	36	36	36
FI, BRDS	FI, Bread, Sourdough, Roll	DZ	248.89	22	12	5	0	30	30	30
FI, BRDS	FI, Bread, Sourdough, Roll	DZ	248.89	40	0	0	140	140	140	140

Neighbourhood Bakery Distribution Report for Wednesday, January 28, 2009

Department: Bread

YTY Group	ABC Restaurants Chain Orders	Baker's Market	Downtown Caring Services	Eco Feedstuffs	Thrifty Stores Inc.	Total
Bread, Multi-Grain, Sliced (loaf)	400	300	50	100		
Bread, Multi-Grain, Texas Sliced (loaf)	400		50			
Bread, Multi-Grain (loaf)	500	300	50			
SD, Baguette (loaf)				50	50	
SD, Baton (loaf)				20	24	
SD, Boule (loaf)			6	60	12	
SD, Loaf (loaf)				50	24	
SD, Roll, Cloverleaf (DZ = 12 rolls)				10	1	
SD, Roll, Knot (DZ = 12 rolls)				10	12	
SD, Roll, Twist (ea)				10	12	
SD, Roll (DZ = 12 rolls)				10	10	

Production Date: Wednesday, January 28, 2009

Dough	Qty (kg)	Qty (lb)
Dough, Sourdough	267.286 kg	589.266 lb

Dough, Sourdough

Ingredient	Qty (kg)	Qty (lb)
Margarine, No Salt	1.662	
Water	58.527	
Flour, Bread, White	148.315	
Flour, Whole Wheat	22.515	
Pacific Sour	38.267	
Totals:	267.286	

roll - 65

1 x 12 x 100g Roll (1.2kg)
3 x 12 x 400g Twist (4.8kg)
3 x 12 x 800g Baton (9.6kg)
6 x 12 x 800g Boule (9.6kg)
6 x 12 x 800g Loaf (9.6kg)
8 x 12 x 800g Baguette (9.6kg)
16 x 24 x 30g Cloverleaf (0.72kg)
22 x 24 x 50g Knot (1.2kg)

Hand Divide - 2

9 x 100g Roll (0.9kg)
9 x 800g Baton (7.2kg)
1 x 800g Boule (0.8kg)
3 x 800g Loaf (2.4kg)
6 x 800g Baguette (4.8kg)

- Schedule your production in minutes based on sales orders actually in the system
- Schedule production based on forecasting, promotional boosts, or averages
- Produce multiple production reports for floor production managers and bakers based on product required
- View raw materials and labour required to meet production for any time period
- Automatically generate purchase orders for raw materials needed to meet production for a specific period
- Schedule production labour requirements
- Print and track production work requests
- Record actual batch yields and lot numbers
- Identify mixer minimum and maximum load requirements
- Create batch round ups for formulas
- Base recipe totals and break-downs for production
- Manage priority recipe sequence production

Call to book an online product demonstration 604-637-6528
Check out our website at www.flexibake.com

Sales



- Manage your customer database
- Check customer credit levels and account history, view warnings when customers are going over their credit limits
- Review all previous orders
- Sales orders are auto-populated with customer details and pick lists
- Pick list allow you to view what customers have previously ordered
- Auto search features make locating products and checking inventory levels a breeze
- Create standing sales orders for customers
- View standing orders for all customers by day of the week to estimate production requirements

S.O. No. 1509

Customer: Thrifty Stores Inc. - Tel: (250) 567-7951

S.O. No. 1509
S.O. DATE 1/25/2009

Customer: Thrifty Stores Inc.
P.O. Box 245
Sooke BC V8T 7J8

SHIP TO: Thrifty Stores Inc.
17 Smith Street
Sooke BC V8T 7J8

CUSTOMER REFERENCE: Canadian Dollars
CURRENCY: Canadian Dollars
TAX PROFILE: Tax Exempt
PAYMENT TERMS: Due upon receipt

SHIP DATE: 1/25/2009
LOADING PORT: Sooke, BC
DESTINATION CITY: Canada

SHIP FROM LOCATION: Sooke, BC
DELIVERY TERMS: FOB Customer
PACKAGING: Default

NOTES (for internal use only):

S.O. CATEGORY:

CODE	NAME	QTY	UNITS	UNIT PRICE	EXTENSION	SHIPPED
BRDSD	SD, Baguette	50	loaf	1.50	75.00	0
SDBT	SD, Baton	24	loaf	1.50	36.00	0
SDBLE	SD, Boule	12	loaf	1.50	18.00	0
SDLF	SD, Loaf					
SDR	SD, Roll					
SDCL	SD, Roll, Cloverleaf					
SDK	SD, Roll, Knot					
SDT	SD, Roll, Twist					

Entered by: ADM on 1/28/2009 11:29:45 AM

☐ Include customer telephone number on printed S.O.

Select Products

☒ Only display products that have previously been ordered.
☐ Highlight products that have not previously been ordered.

Category:

Sort By: Category - Product Name

☐ Display Excluded Products
☐ Display Availability

Base Average and Last Quantities on All orders placed since 12/9/2008

CODE	NAME	UNITS	PRICE	LAST ORD	AVG	LAST	QTY	AVAIL
BRDPL	Fugliese	loaf	1.50	3/13/2009	33.333	50	50	0
BRDSD	SD, Baguette	loaf	1.50	3/13/2009	66.667	100	100	0
SDBT	SD, Baton	loaf	1.50	3/13/2009	66.667	100	100	0
SDBLE	SD, Boule	loaf	1.50	3/13/2009	60.6	100	100	0
SDCL	SD, Roll, Cloverleaf	DZ	1.50	3/13/2009	20	20	20	0
SDK	SD, Roll, Knot	DZ	1.50	3/13/2009	10	10	10	0
BRDMG	Bread, Multi-Grain	loaf	1.95	3/13/2009	50	50	50	0
BRDMG8	Bread, Multi-Grain, Sliced	loaf	1.95	3/13/2009	68.174	50	50	0
BRDMOT	Bread, Multi-Grain, Texas Sliced	loaf	1.95	3/13/2009	50	50	50	0
CHSBLBSVL6	Cheesecake, Blueberry Swirl, 6"	cs	55.70	6/8/2007	32	32		0
CHSCAP8	Cheesecake, Cappuccino, 6"	cs	55.70	5/21/2007	32	32		0
CHSMINI	Cheesecake, Mini	cs	95.40	3/13/2009	1.25	1	1	0
XMCHSREMIN	Xmas, Cheesecake, Mini, Rum & Eggnog	cs	74.60	5/16/2007	1	1		0
XMCHSRE10	Xmas, Cheesecake, Rum & Eggnog, 10"	cs	65.65	3/19/2007	1	1		0
XMMYLFAN	Xmas, Mini Yule Log, Fancy	cs	65.30	3/19/2007	1	1		0

Standing Sales Orders

Customer: All Customers

Notes:

Display: ☐ All Products ☐ Last Order ☐ Products On Order ☐ Account for returns

Average of last 2 weeks

Start with: Wednesday

Show 7 days

Group By: Category ☐ Highlight Alternate Days ☐ Autoclose Columns

Shadow Order: ☐

CODE	NAME	SELL BY UNITS	UNIT PRICE	WED QTY	THU QTY	FRI QTY	SAT QTY	SUN QTY	MON QTY	TUE QTY
CHSBLBSVL6	Cheesecake, Blueberry Swirl, 6"	cs	55.40	21	20	21	10	10	21	20
BRDPL	Fugliese	loaf	1.50	1600	800	1600	1600	1600	1600	1600
BRDMG	Bread, Multi-Grain	loaf	1.95	850	800	850	700	800	850	800
BRDMG8	Bread, Multi-Grain, Sliced	loaf	1.95	850	800	850	700	800	850	800
BRDMOT	Bread, Multi-Grain, Texas Sliced	loaf	1.95	450	400	450	400	400	450	400
SDLF	SD, Loaf	loaf	1.50	74	74	74	74	74	74	74
BRDSD	SD, Baguette	loaf	1.50	100	100	100	100	100	100	100
SDBT	SD, Baton	loaf	1.50	44	44	44	44	44	44	44
SDBLE	SD, Boule	loaf	1.50	72	72	72	72	72	72	72
SDK	SD, Roll, Knot	DZ	1.50	20	20	20	20	20	20	20
SDT	SD, Roll, Twist	loaf	1.50	22	22	22	22	22	22	22
SDK	SD, Roll, Knot	DZ	1.50	22	22	22	22	22	22	22
SDCL	SD, Roll, Cloverleaf	DZ	1.50	11	11	11	11	11	11	11

Purchasing

- Manage your supplier database
- Review previous purchase orders within a few simple mouse clicks
- Purchase orders are auto-populated with supplier details and include previous order pick lists and auto search features to simplify locating raw materials and checking inventory levels
- Supplier product codes and pack sizes can be used when ordering raw materials thus avoiding any confusion as to what was ordered
- Setup preferred suppliers and pack size for each raw material
- Create standing purchase orders
- Report on raw materials at or below re-order levels
- A large number of reports are available



P.O. No. 1385

Supplier: Hawthorne Ingredient Supply, Ltd.

SUPPLIER: Hawthorne Ingredient Supply, Ltd.
1637 George Clooney Drive
Burnaby, BC V3N 5G4

P.O. No. 1385
P.O. DATE: 12/22/2007

SUPPLIER REFERENCE: CURRENCY: Canadian Dollars PAYMENT TERMS: 1% 10 days, net 30

DATE REQUIRED: 12/23/2007 DELIVERY TERMS: FOB Plant LOADING PORT: TRACKING NUMBER:

DESTINATION CITY: Burnaby, BC DESTINATION COUNTRY: Canada PACKAGING:

NOTES (to appear on P.O.): NOTES (for internal use only):

CODE NAME QTY UNITS UNIT COST EXTENSION RCVG

71568	FOND, 2-STEP TIRAMISU, (PALOMA) - 10kg	25	bag (10 kg)	88.9	1,687.75	0
-------	--	----	-------------	------	----------	---

Raw Materials At Or Below Re-order Level

Description	Supplier	Units	On Hand	Available	Reorder Level	Reorder Qty
Calcium Propionate	Hawthorne Ingredient Supply, Ltd.	kg	22,700	22,700	50,000	8,000
Chocolate Slab, Bitter	Chappin's Candies Ltd.	kg	8,000	8,000	100,000	125,000
Chocolate Slab, Dark	Chappin's Candies Ltd.	kg	395,000	395,000	400,000	200,000
Compound, Mango	Vienma Bakery Supplier Ltd.	kg	32,500	32,500	50,000	25,000

January 15, 2009 at 10:35 am Page 1 of 1

Call to book an online product demonstration 604-637-6528
Check out our website at www.flexibake.com

Shipping

- Ship and receive products and raw materials from one convenient interface
- Create multiple route deliveries and drag and drop customers on to routes
- Manage the sequence of delivery for drivers
- Delivery vehicle loading slips sequences the order to be loaded into trucks for delivery
- Use built in MapQuest to map out your delivery routes
- Identify and calculate driver's sales commissions
- Manage all returns
- View all shipments and deliveries for the day or the week
- Warnings when shipments or deliveries are late or in jeopardy



Manage Routes

Route 1: Downtown Catering Services, ABC Restaurants - British Columbia, Brown's Market, 711 Group

Route 2: 651 Supermarkets - Langley, 651 Supermarkets - Abbotsford, 651 Supermarkets - Coquitlam, 651 Supermarkets - Richmond, Great Western Bazaar - Westside, 651 Supermarkets - Vancouver

Route 3: CostCutters - Langley, CostCutters - Abbotsford, CostCutters - Coquitlam, CostCutters - Burnaby, CostCutters - Vancouver

Customer List: ABC Restaurants - Alberta, ABC Restaurants - Ontario, Bely Trading, BC Grocers Ltd, Bely Bakes Shop, Brookside General Produce, Brown and Sons, Cash Sale, Conkle - Abbotsford, Conkle - Victoria, Ecco Foodstuffs, Jeff's Gourmet Delights, Vancor Trading, OMC Food Supply, Journal Bakers Inc., Journal Bakers - Vancouver

Route Delivery Slip No. 1506

Date: 1/29/2009
Route: Route 1
S.O. No: 1506
Customer: 711 Group

Crates: Delivered: 0, Returned: 0 (0 expected)

Notes:

Code	Name	Units	Ordered	Delivered	Shorts	Total	Unit Cost	Extension
CHSMINI	Cheesecake, Mini	cs	10	10		95.4000		954.00
BRNCC	Brownie, Chocolate Chunk	brownie	1000	1000		0.4500		450.00
BRDMG	Bread, Multi-Grain	loaf	500	500		1.9500		975.00
BRDMGS	Bread, Multi-Grain, Sliced	loaf	400	400		1.9500		780.00
BRDMGT	Bread, Multi-Grain, Texas Sliced	loaf	400	400		1.9500		780.00
Order Total:							3,939.00	



ROUTE DELIVERY SLIP

CUSTOMER: 711 Group
39 DAP Business Park
Toronto ON: 077 6T6

DELIVERY DATE: January 29, 2009
ORDER DATE: January 29, 2009
ORDER No: 1506
CUSTOMER REF:
ROUTE: Route 1

PRODUCT DELIVERED:

Code	Name	Quantity	Unit Price	Total
CHSMINI	Cheesecake, Mini	10.0000 cs	95.40	954.00
BRNCC	Brownie, Chocolate Chunk	1,000.0000 brownie	0.45	450.00
BRDMG	Bread, Multi-Grain	500.0000 loaf	1.95	975.00
BRDMGS	Bread, Multi-Grain, Sliced	400.0000 loaf	1.95	780.00
BRDMGT	Bread, Multi-Grain, Texas Sliced	400.0000 loaf	1.95	780.00
Order Total:				3,939.00

PACKED BY: _____

Accounting

- Invoice customers, maintain payments, issue credit notes and produce statements
- Create a single invoice for multiple delivery slips for customer
- Option to edit delivery slips before creating invoice
- Manage receivables
- Export transaction details to your accounting program
- Manage employee information and track employee work hours
- Maintain currency exchange rates



Receive Payment

Customer: 711 Group Payment Date: 10/16/2007

Account No.: 412 Account Balance: 0.00 Account Currency: Canadian Dollars

Amount Paid: 11826.00 Paid By: Reference: Memo:

Amount Paid: 11,826.00 Applied Amount: 11,783.00 Unapplied Amount: 123.00

Invoice No.	Order No.	Date	Date Due	Disc. Date	Invoice Amt.	Balance	Amount Paid
1452	1455	9/24/2007	9/24/2007		3,939.00	3,939.00	3,939.00
1455	1454	9/25/2007	9/25/2007		3,939.00	3,900	3,900.00
1459	1457	10/1/2007	10/1/2007		3,939.00	3,939.00	3,939.00
1464	1470	10/16/2007	10/16/2007		3,939.00	3,939.00	3,939.00
1468	1474	12/3/2007	12/3/2007		4,134.00	4,134.00	

☐ Apply Payment To Invoices Automatically

Approve Invoices

Delivery Slips To Be Invoiced

D.S. No.	D.S. Date	D.S. No.	Customer
17	1/27/2009	1486	Bruce's Market
19	1/27/2009	1489	ABC Restaurants - British Columbia
20	1/27/2009	1490	Bbs Supermarkets - Abbotsford
21	1/27/2009	1491	Bruce's Market
22	1/27/2009	1492	Downtown Catering Services
23	1/27/2009	1493	ABC Restaurants - British Columbia
24	1/27/2009	1494	Coat-Of-Arms - Coquitlam
25	1/27/2009	1495	711 Group
26	1/27/2009	1496	ABC Restaurants - British Columbia
28	1/27/2009	1498	Esco Foodstores
29	1/27/2009	1499	Thrifty Stores Inc.
30	1/27/2009	1500	711 Group
31	1/27/2009	1501	ABC Restaurants - British Columbia
34	1/27/2009	1504	Esco Foodstores
35	1/27/2009	1505	Thrifty Stores Inc.

Invoices To Be Exported

Invoice No.	Date	Customer	Tax	Amount
1444	2007-09-19	Downtown Catering Services	(604) 567-9534	1,140.00
1445	2007-09-19	Bruce's Market	(604) 567-9534	378.15
1446	2007-09-19	711 Group	(605) 878-3112	4,221.00
1447	2007-09-23	711 Group	(605) 878-3112	3,849.00
1448	2007-09-23	Downtown Catering Services	(604) 599-5578	1,129.50
1450	2007-09-24	Bruce's Market	(604) 567-9534	769.50
1451	2007-09-24	ABC Restaurants - British Columbia	(604) 789-8552	1,850.00
1449	2007-09-24	Downtown Catering Services	(604) 599-5578	1,139.00
1452	2007-09-24	711 Group	(605) 878-3112	3,939.00
1453	2007-09-25	Downtown Catering Services	(604) 599-5578	1,139.00
1454	2007-09-25	ABC Restaurants - British Columbia	(604) 789-8552	1,850.00
1455	2007-09-25	711 Group	(605) 878-3112	3,939.00
1456	2007-10-01	Downtown Catering Services	(604) 599-5578	1,129.50
1458	2007-10-01	ABC Restaurants - British Columbia	(604) 789-8552	1,850.00
1459	2007-10-01	711 Group	(605) 878-3112	3,939.00
1457	2007-10-06	Bruce's Market	(604) 567-9534	387.90
1474	2007-10-06	ABC Restaurants - British Columbia	(604) 789-8552	1,515.00
1473	2007-10-06	Bruce's Market	(604) 567-9534	387.90
1460	2007-10-06	Downtown Catering Services	(604) 599-5578	1,129.75
1475	2007-10-06	711 Group	(605) 878-3112	3,714.00
1472	2007-10-07	711 Group	(605) 878-3112	3,287.00
1471	2007-10-07	ABC Restaurants - British Columbia	(604) 789-8552	1,400.00

Buttons: Create Invoice, Edit Delivery Slip, Call S.O., View Invoice, Add Invoice Data, Reverse Invoice

Call to book an online product demonstration 604-637-6528
Check out our website at www.flexibake.com

Management

- Create What-if scenarios for changes in prices for raw materials or labour to see which products will be affected and no longer making the required profit margins, with the option to set new prices as permanent
- Sales forecasting allows sales staff to enter and update sales forecast for each customer per product for any period, this information is used by management in scheduling production and labour requirements to control advertising spend and equipment needs
- Overhead costs aids in determining the company's overhead rate which can be included when costing products
- Analysis of previous years sales by customer, product, week, month, and year
- Many reports and interactive query tools are provided to enable management to analyze every aspect of the business



Compare average product cost against:

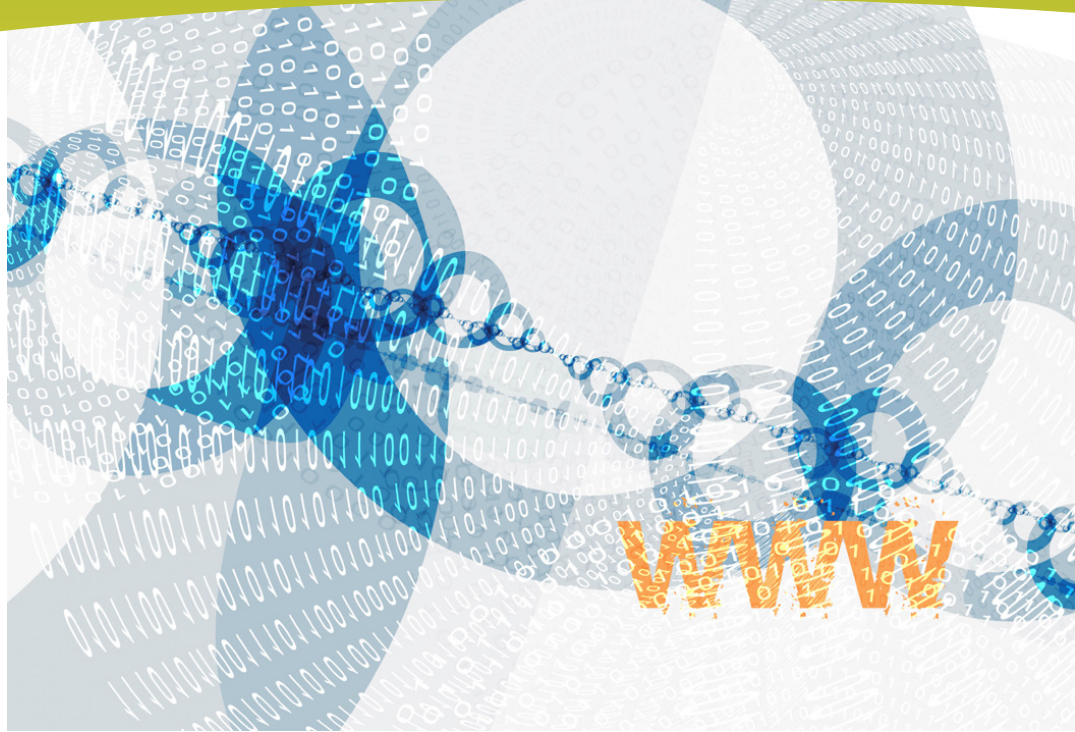
☐ the cost as at:
☐ the average cost since:

Display: Total Cost

Code	Name	Current Cost	Historical Cost	% Change
BROMO	Bread, Multi-Grain	1.29	1.29	0%
BROMOS	Bread, Multi-Grain, Sliced	1.29	1.29	0%
BROMST	Bread, Multi-Grain, Texas Sliced	1.28	1.28	0%
BRNCC	Brownie, Chocolate Chunk	0.28	0.28	0%
CHBLSG01L	Cake, Black Forest 10"	5.91	5.91	0%
CHBLSG02L	Cake, Boston Cream, 10"	5.99	5.99	0%
CHLCHG08B	Choc. Brownie, 10"	5.99	5.99	0%
CHRASMOU10	Choc. Brownie, 10"	5.99	5.99	0%
CHTR10	12678	5.99	5.99	0%
CHTR10A	12678	5.99	5.99	0%
CHTR10B	12678	5.99	5.99	0%
CHTR10C	12678	5.99	5.99	0%
CHTR10D	12678	5.99	5.99	0%
CHTR10E	12678	5.99	5.99	0%
CHTR10F	12678	5.99	5.99	0%
CHTR10G	12678	5.99	5.99	0%
CHTR10H	12678	5.99	5.99	0%
CHTR10I	12678	5.99	5.99	0%
CHTR10J	12678	5.99	5.99	0%
CHTR10K	12678	5.99	5.99	0%
CHTR10L	12678	5.99	5.99	0%
CHTR10M	12678	5.99	5.99	0%
CHTR10N	12678	5.99	5.99	0%
CHTR10O	12678	5.99	5.99	0%
CHTR10P	12678	5.99	5.99	0%
CHTR10Q	12678	5.99	5.99	0%
CHTR10R	12678	5.99	5.99	0%
CHTR10S	12678	5.99	5.99	0%
CHTR10T	12678	5.99	5.99	0%
CHTR10U	12678	5.99	5.99	0%
CHTR10V	12678	5.99	5.99	0%
CHTR10W	12678	5.99	5.99	0%
CHTR10X	12678	5.99	5.99	0%
CHTR10Y	12678	5.99	5.99	0%
CHTR10Z	12678	5.99	5.99	0%
CHTR10AA	12678	5.99	5.99	0%
CHTR10AB	12678	5.99	5.99	0%
CHTR10AC	12678	5.99	5.99	0%
CHTR10AD	12678	5.99	5.99	0%
CHTR10AE	12678	5.99	5.99	0%
CHTR10AF	12678	5.99	5.99	0%
CHTR10AG	12678	5.99	5.99	0%
CHTR10AH	12678	5.99	5.99	0%
CHTR10AI	12678	5.99	5.99	0%
CHTR10AJ	12678	5.99	5.99	0%
CHTR10AK	12678	5.99	5.99	0%
CHTR10AL	12678	5.99	5.99	0%
CHTR10AM	12678	5.99	5.99	0%
CHTR10AN	12678	5.99	5.99	0%
CHTR10AO	12678	5.99	5.99	0%
CHTR10AP	12678	5.99	5.99	0%
CHTR10AQ	12678	5.99	5.99	0%
CHTR10AR	12678	5.99	5.99	0%
CHTR10AS	12678	5.99	5.99	0%
CHTR10AT	12678	5.99	5.99	0%
CHTR10AU	12678	5.99	5.99	0%
CHTR10AV	12678	5.99	5.99	0%
CHTR10AW	12678	5.99	5.99	0%
CHTR10AX	12678	5.99	5.99	0%
CHTR10AY	12678	5.99	5.99	0%
CHTR10AZ	12678	5.99	5.99	0%
CHTR10BA	12678	5.99	5.99	0%
CHTR10BB	12678	5.99	5.99	0%
CHTR10BC	12678	5.99	5.99	0%
CHTR10BD	12678	5.99	5.99	0%
CHTR10BE	12678	5.99	5.99	0%
CHTR10BF	12678	5.99	5.99	0%
CHTR10BG	12678	5.99	5.99	0%
CHTR10BH	12678	5.99	5.99	0%
CHTR10BI	12678	5.99	5.99	0%
CHTR10BJ	12678	5.99	5.99	0%
CHTR10BK	12678	5.99	5.99	0%
CHTR10BL	12678	5.99	5.99	0%
CHTR10BM	12678	5.99	5.99	0%
CHTR10BN	12678	5.99	5.99	0%
CHTR10BO	12678	5.99	5.99	0%
CHTR10BP	12678	5.99	5.99	0%
CHTR10BQ	12678	5.99	5.99	0%
CHTR10BR	12678	5.99	5.99	0%
CHTR10BS	12678	5.99	5.99	0%
CHTR10BT	12678	5.99	5.99	0%
CHTR10BU	12678	5.99	5.99	0%
CHTR10BV	12678	5.99	5.99	0%
CHTR10BW	12678	5.99	5.99	0%
CHTR10BX	12678	5.99	5.99	0%
CHTR10BY	12678	5.99	5.99	0%
CHTR10BZ	12678	5.99	5.99	0%
CHTR10CA	12678	5.99	5.99	0%
CHTR10CB	12678	5.99	5.99	0%
CHTR10CC	12678	5.99	5.99	0%
CHTR10CD	12678	5.99	5.99	0%
CHTR10CE	12678	5.99	5.99	0%
CHTR10CF	12678	5.99	5.99	0%
CHTR10CG	12678	5.99	5.99	0%
CHTR10CH	12678	5.99	5.99	0%
CHTR10CI	12678	5.99	5.99	0%
CHTR10CJ	12678	5.99	5.99	0%
CHTR10CK	12678	5.99	5.99	0%
CHTR10CL	12678	5.99	5.99	0%
CHTR10CM	12678	5.99	5.99	0%
CHTR10CN	12678	5.99	5.99	0%
CHTR10CO	12678	5.99	5.99	0%
CHTR10CP	12678	5.99	5.99	0%
CHTR10CQ	12678	5.99	5.99	0%
CHTR10CR	12678	5.99	5.99	0%
CHTR10CS	12678	5.99	5.99	0%
CHTR10CT	12678	5.99	5.99	0%
CHTR10CU	12678	5.99	5.99	0%
CHTR10CV	12678	5.99	5.99	0%
CHTR10CW	12678	5.99	5.99	0%
CHTR10CX	12678	5.99	5.99	0%
CHTR10CY	12678	5.99	5.99	0%
CHTR10CZ	12678	5.99	5.99	0%
CHTR10DA	12678	5.99	5.99	0%
CHTR10DB	12678	5.99	5.99	0%
CHTR10DC	12678	5.99	5.99	0%
CHTR10DD	12678	5.99	5.99	0%
CHTR10DE	12678	5.99	5.99	0%
CHTR10DF	12678	5.99	5.99	0%
CHTR10DG	12678	5.99	5.99	0%
CHTR10DH	12678	5.99	5.99	0%
CHTR10DI	12678	5.99	5.99	0%
CHTR10DJ	12678	5.99	5.99	0%
CHTR10DK	12678	5.99	5.99	0%
CHTR10DL	12678	5.99	5.99	0%
CHTR10DM	12678	5.99	5.99	0%
CHTR10DN	12678	5.99	5.99	0%
CHTR10DO	12678	5.99	5.99	0%
CHTR10DP	12678	5.99	5.99	0%
CHTR10DQ	12678	5.99	5.99	0%
CHTR10DR	12678	5.99	5.99	0%
CHTR10DS	12678	5.99	5.99	0%
CHTR10DT	12678	5.99	5.99	0%
CHTR10DU	12678	5.99	5.99	0%
CHTR10DV	12678	5.99	5.99	0%
CHTR10DW	12678	5.99	5.99	0%
CHTR10DX	12678	5.99	5.99	0%
CHTR10DY	12678	5.99	5.99	0%
CHTR10DZ	12678	5.99	5.99	0%
CHTR10EA	12678	5.99	5.99	0%
CHTR10EB	12678	5.99	5.99	0%
CHTR10EC	12678	5.99	5.99	0%
CHTR10ED	12678	5.99	5.99	0%
CHTR10EE	12678	5.99	5.99	0%
CHTR10EF	12678	5.99	5.99	0%
CHTR10EG	12678	5.99	5.99	0%
CHTR10EH	12678	5.99	5.99	0%
CHTR10EI	12678	5.99	5.99	0%
CHTR10EJ	12678	5.99	5.99	0%
CHTR10EK	12678	5.99	5.99	0%
CHTR10EL	12678	5.99	5.99	0%
CHTR10EM	12678	5.99	5.99	0%
CHTR10EN	12678	5.99	5.99	0%
CHTR10EO	12678	5.99	5.99	0%
CHTR10EP	12678	5.99	5.99	0%
CHTR10EQ	12678	5.99	5.99	0%
CHTR10ER	12678	5.99	5.99	0%
CHTR10ES	12678	5.99	5.99	0%
CHTR10ET	12678	5.99	5.99	0%
CHTR10EU	12678	5.99	5.99	0%
CHTR10EV	12678	5.99	5.99	0%
CHTR10EW	12678	5.99	5.99	0%
CHTR10EX	12678	5.99	5.99	0%
CHTR10EY	12678	5.99	5.99	0%
CHTR10EZ	12678	5.99	5.99	0%
CHTR10FA	12678	5.99	5.99	0%
CHTR10FB	12678	5.99	5.99	0%
CHTR10FC	12678	5.99	5.99	0%
CHTR10FD	12678	5.99	5.99	0%
CHTR10FE	12678	5.99	5.99	0%
CHTR10FF	12678	5.99	5.99	0%
CHTR10FG	12678	5.99	5.99	0%
CHTR10FH	12678	5.99	5.99	0%
CHTR10FI	12678	5.99	5.99	0%
CHTR10FJ	12678	5.99	5.99	0%
CHTR10FK	12678	5.99	5.99	0%
CHTR10FL	12678	5.99	5.99	0%
CHTR10FM	12678	5.99	5.99	0%
CHTR10FN	12678	5.99	5.99	0%
CHTR10FO	12678	5.99	5.99	0%
CHTR10FP	12678	5.99	5.99	0%
CHTR10FQ	12678	5.99	5.99	0%
CHTR10FR	12678	5.99	5.99	0%
CHTR10FS	12678	5.99	5.99	0%
CHTR10FT	12678	5.99	5.99	0%
CHTR10FU	12678	5.99	5.99	0%
CHTR10FV	12678	5.99	5.99	0%
CHTR10FW	12678	5.99	5.99	0%
CHTR10FX	12678	5.99	5.99	0%
CHTR10FY	12678	5.99	5.99	0%
CHTR10FZ	12678	5.99	5.99	0%
CHTR10GA	12678	5.99	5.99	0%
CHTR10GB	12678	5.99	5.99	0%
CHTR10GC	12678	5.99	5.99	0%
CHTR10GD	12678	5.99	5.99	0%
CHTR10GE	12678	5.99	5.99	0%
CHTR10GF	12678	5.99	5.99	0%
CHTR10GG	12678	5.99	5.99	0%
CHTR10GH	12678	5.99	5.99	0%
CHTR10GI	12678	5.99	5.99	0%
CHTR10GJ	12678	5.99	5.99	0%
CHTR10GK	12678	5.99	5.99	0%
CHTR10GL	12678	5.99	5.99	0%
CHTR10GM	12678	5.99	5.99	0%
CHTR10GN	12678	5.99	5.99	0%
CHTR10GO	12678	5.99	5.99	0%
CHTR10GP	12678	5.99	5.99	0%
CHTR10GQ	12678	5.99	5.99	0%
CHTR10GR	12678	5.99	5.99	0%
CHTR10GS	12678	5.99	5.99	0%
CHTR10GT	12678	5.99	5.99	0%
CHTR10GU	12678	5.99	5.99	0%
CHTR10GV	12678	5.99	5.99	0%
CHTR10GW	12678	5.99	5.99	0%
CHTR10GX	12678	5.99	5.99	0%
CHTR10GY	12678	5.99	5.99	0%
CHTR10GZ	12678	5.99	5.99	0%
CHTR10HA	12678	5.99	5.99	0%
CHTR10HB	12678	5.99	5.99	0%
CHTR10HC	12678	5.99	5.99	0%
CHTR10HD	12678	5.99	5.99	0%
CHTR10HE	12678	5.99	5.99	0%
CHTR10HF	12678	5.99	5.99	0%
CHTR10HG	12678	5.99	5.99	0%
CHTR10HH	12678	5.99	5.99	0%
CHTR10HI	12678	5.99	5.99	0%
CHTR10HJ	12678	5.99	5.99	0%
CHTR10HK	12678	5.99	5.99	0%
CHTR10HL	12678	5.99	5.99	0%
CHTR10HM	12678	5.99	5.99	0%
CHTR10HN	12678	5.99	5.99	0%
CHTR10HO	12678	5.99	5.99	0%
CHTR10HP	12678	5.99	5.99	0%
CHTR10HQ	12678	5.99	5.99	0%
CHTR10HR	12678	5.99	5.99	0%
CHTR10HS	12678	5.99	5.99	0%
CHTR10HT	12678	5.99	5.99	0%
CHTR10HU	12678	5.99	5.99	0%
CHTR10HV	12678			

Online Ordering

- Web based ordering allows your customers to enter their sales orders online
- Customers can set up and maintain standing orders
- Cut off times can be set up restrict late orders
- Customers can look at past order history
- Customers can pull product information such as nutritional information and nutritional specifications



Call to book an online product demonstration 604-637-6528
Check out our website at www.flexibake.com

Point of Sale Interface

- Use our POS Interface to connect your POS to FlexiBake
- Use our 3rd party POS solution for single or multiple retail locations
- Eliminate redundant data entry and streamline sales into FlexiBake for accurate production reporting and inventory controls.
- Track and report on customers sales history.
- Ensure accurate product pricing and payments.



Available in Fall of 2010



Affiliations



A few of our valued customers

